

Create and share Server Objects and Server Bookmarks - Plugin client

(Qlikview version 10)

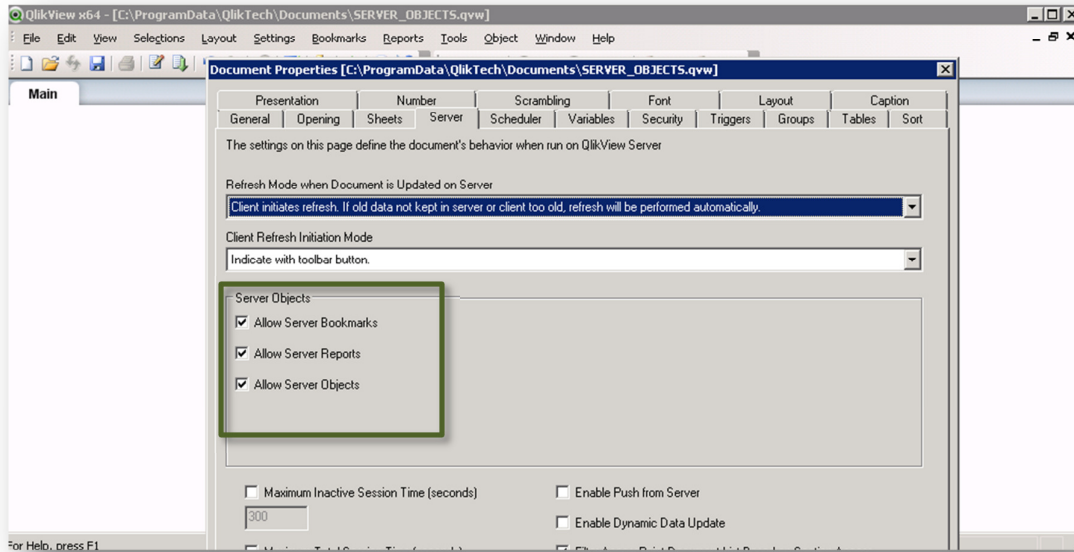
Table of Contents

1. Possible Settings	- 3 -
1.1 On the Document	- 3 -
1.2 On the Qlikview Server	- 4 -
1.3 On the User Document	- 5 -
2. Create and share a Server Object.....	- 6 -
2.1 Settings	- 6 -
2.2 Creating a server object	- 7 -
2.2.1 View server objects	- 8 -
2.2.2 Remove a server object	- 9 -
2.3 Sharing a server object	- 10 -
2.3.1 Unshare a Server object	- 13 -
3. Create and share a Server Bookmark.....	- 14 -
3.1 Settings:	- 14 -
3.2 Create a server bookmark	- 15 -
3.3 Share a Server Bookmark	- 16 -
3.3.1 Create a shared server bookmark	- 17 -
3.3.1 Unshare a server bookmark	- 18 -
4. Qlikview Server	- 19 -
5. Shared file.....	- 19 -

1. Possible Settings

1.1 On the Document

Settings/Document Properties/Server



Depending on what Server Object you want to allow check/uncheck

Allow Server Bookmarks This check box must be enabled, if remote clients are to be allowed to create and share bookmarks with this document on the QlikView Server.

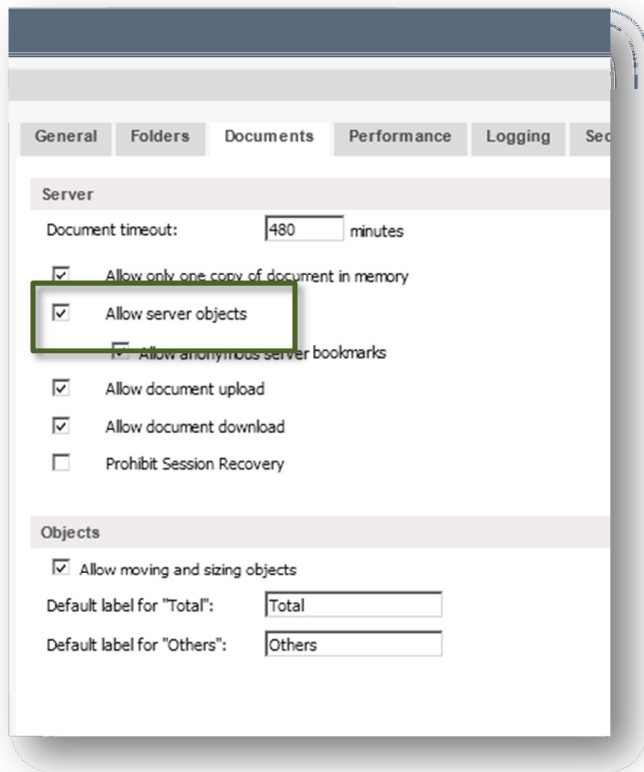
Allow Server Objects This check box must be enabled, if remote clients are to be allowed to create and share sheet objects with this document on the QlikView Server.

Allow Server Reports This check box must be enabled, if remote clients are to be allowed to create and share reports with this document on the QlikView Server.

1.2 On the Qlikview Server

Qlikview Enterprise Management Console/System/Setup/Qlikview Servers/QVS/Documents

Allow Server Objects need to be checked.



The screenshot displays the 'Documents' configuration tab in the Qlikview Enterprise Management Console. The 'Server' section contains the following settings:

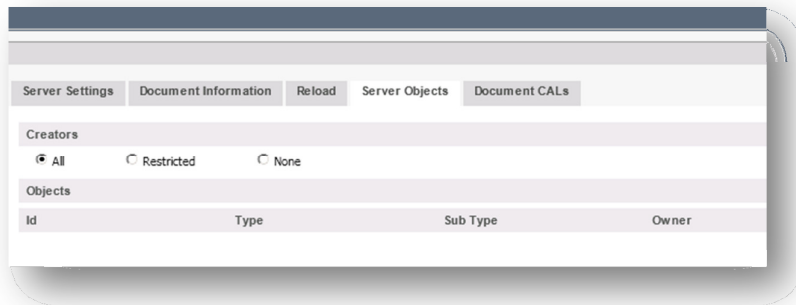
- Document timeout: 480 minutes
- ☒ Allow only one copy of document in memory
- ☒ Allow server objects (highlighted with a green box)
- ☒ Allow anonymous server bookmarks
- ☒ Allow document upload
- ☒ Allow document download
- ☐ Prohibit Session Recovery

The 'Objects' section contains the following settings:

- ☒ Allow moving and sizing objects
- Default label for "Total": Total
- Default label for "Others": Others

1.3 On the User Document

Qlikview Enterprise Management Console/Documents/UserDocuments/[XXXX].qvw/Server Objects



Choose from following options for creators allowed to create server objects on the specific document:

All – All users will be able to create Server Objects

Restricted – Add the users that should be allowed to create Server Objects on this document)

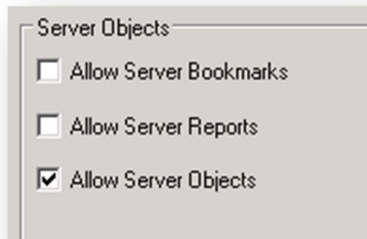
None – No users will be able to create Server Objects

NOTE: If having Qlikview Publisher this shall be set on the Source Document.

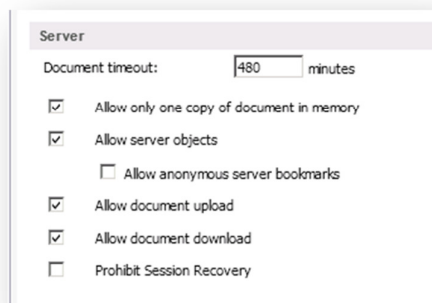
2. Create and share a Server Object

2.1 Settings

On the document:



On the QlikViewServer

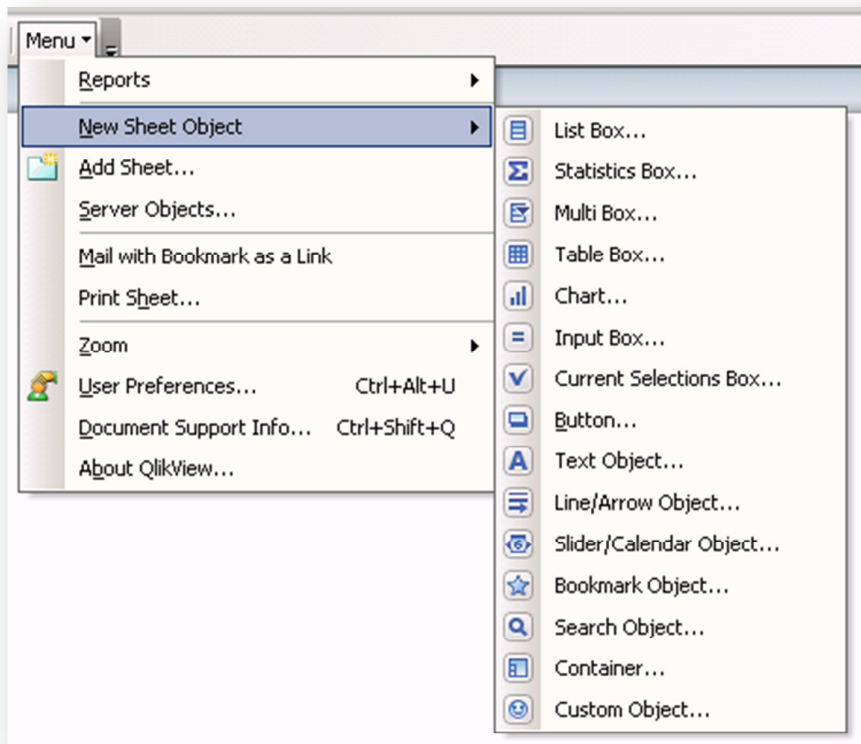


On the User Document



2.2 Creating a server object

Open the document with IE Plugin Client and create a new sheet object either by right click menu or from the Toolbar Menu/**New Sheet Object**.

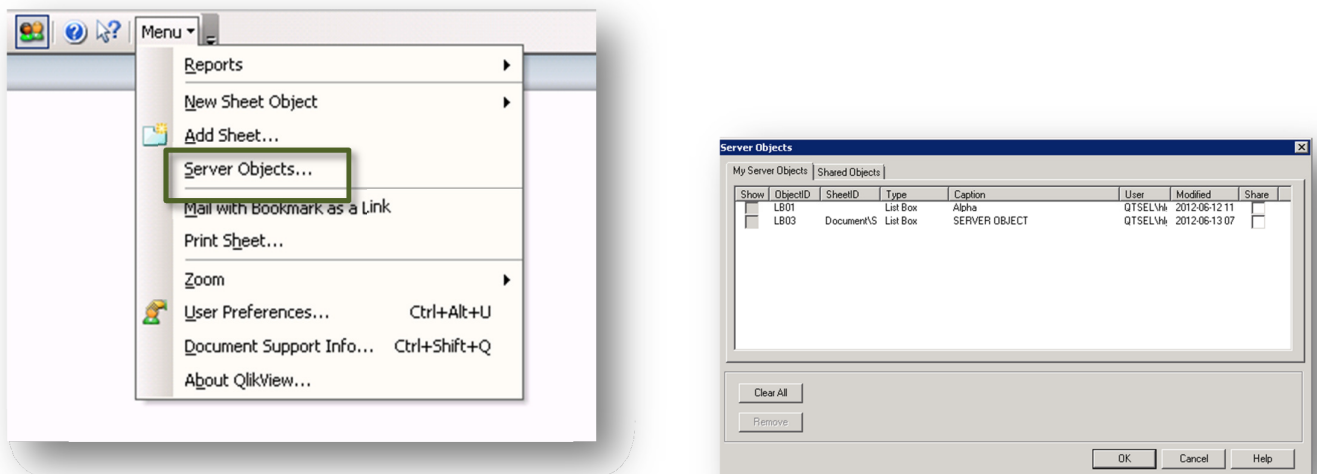


2.2.1 View server objects

To view your Server objects you can either open the **Server Objects Pane** by clicking toolbar icon

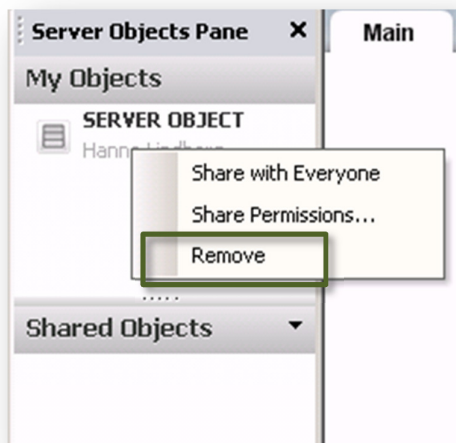


Or from the toolbar go to Menu/**Server Objects** and open the Server Objects dialog.

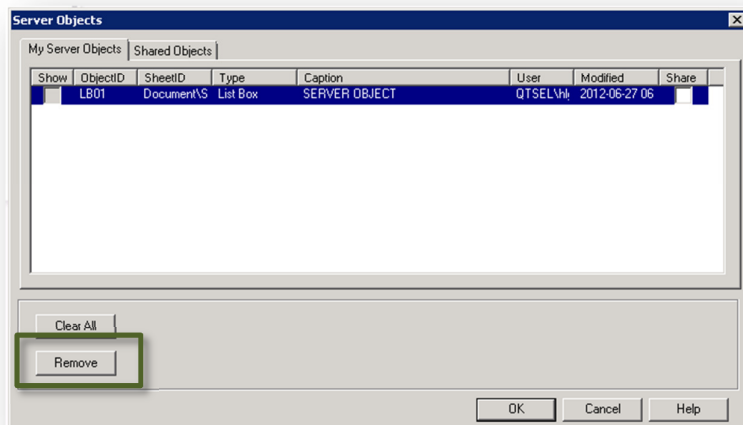


2.2.2 Remove a server object

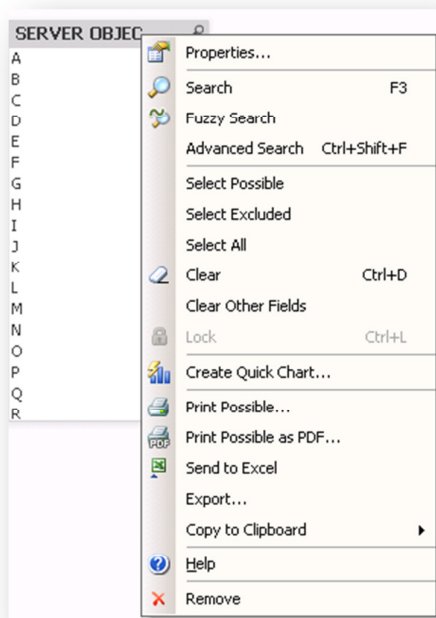
To remove your server object right click on the object in the server object pane and press **Remove**



Or by the Menu/**Server Objects** and open the Server Objects dialog, mark the Server object and press **Remove**

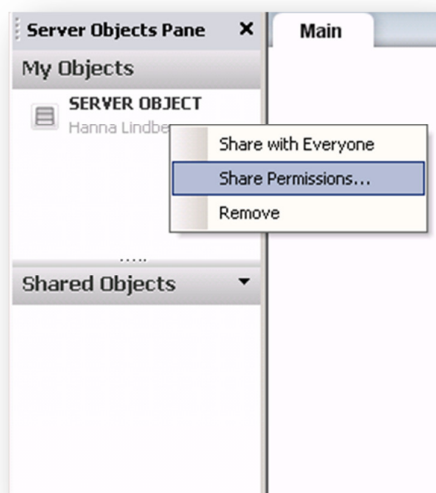


By right click on the object and press **Remove** you also have the possibility to just remove your server object from your sheet and keeping it for later use in your Server Objects pane.

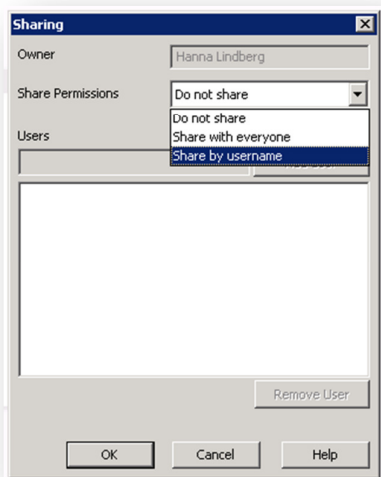


2.3 Sharing a server object

To share your server object with other users open the **Server Objects Pane** and right click on your Server Object.



Here you can choose Share permissions to **Share with everyone** or **Share by Username**.

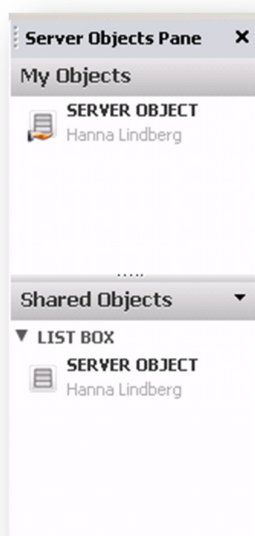


Do not share The object is not shared with any users.

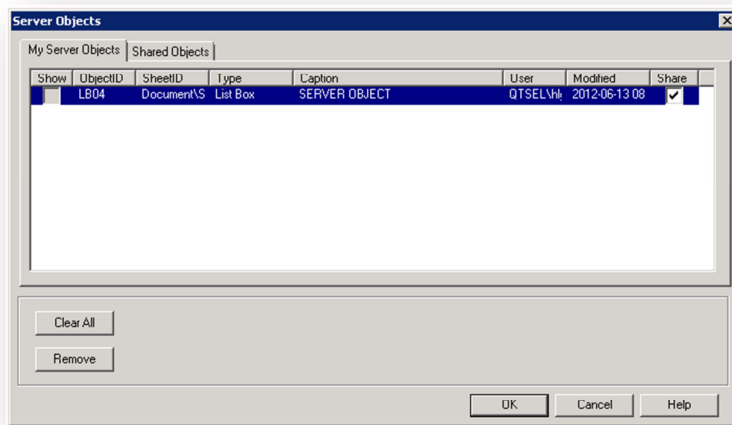
Share with everybody The object is shared with all users.

Share by username The object is shared with the users that are listed below.

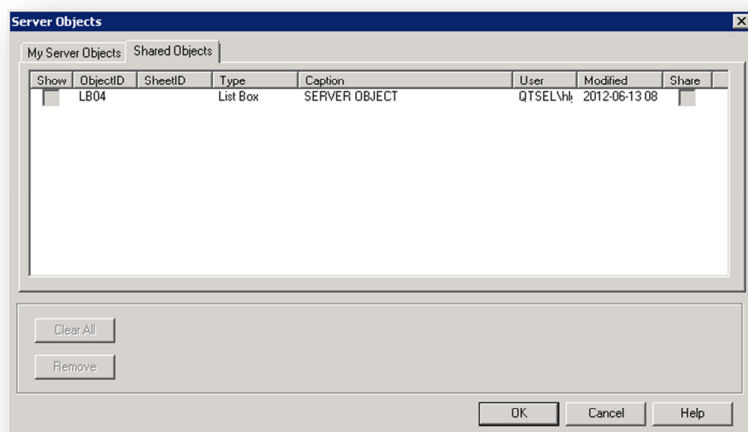
When you have shared you Server Object you can see that this object is added to **Shared Objects** in the Server Objects Pane. If other users have shared their objects these will also be listed under Share objects for you to drag on to your application sheet.



You can also share you object by opening the Server Objects dialog and check option **Share**

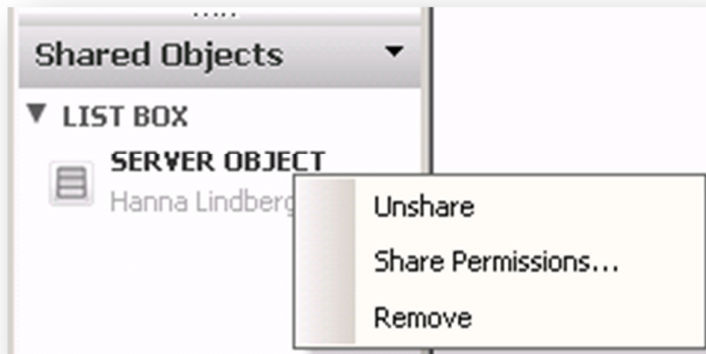


The Server Object will then be added to tab **Shared Objects**

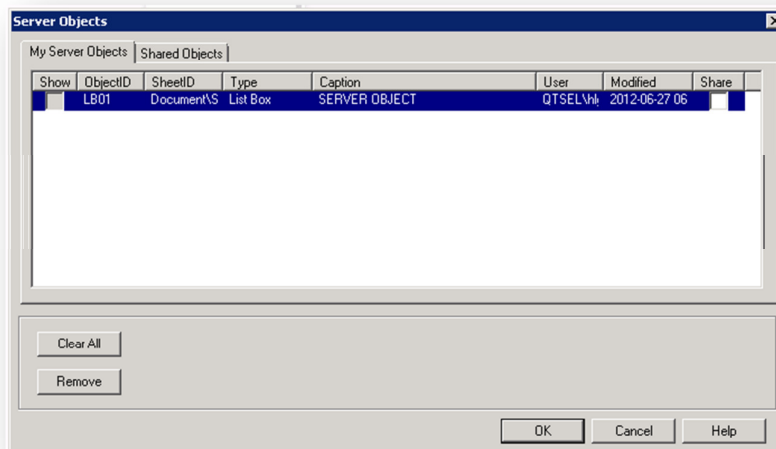


2.3.1 Unshare a Server object

By right click on the shared Server object in the server objects pane you are able to ***Unshare***



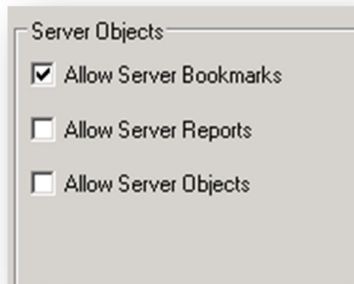
You can also unshare you object by opening the Server Objects dialog and uncheck option *Share*



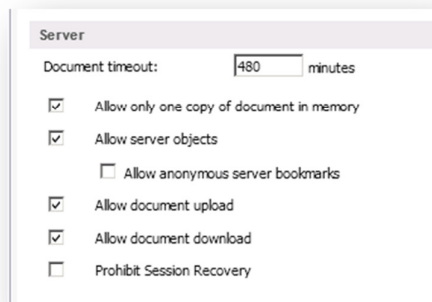
3. Create and share a Server Bookmark

3.1 Settings:

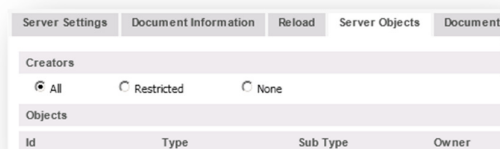
On document



On QlikViewServer

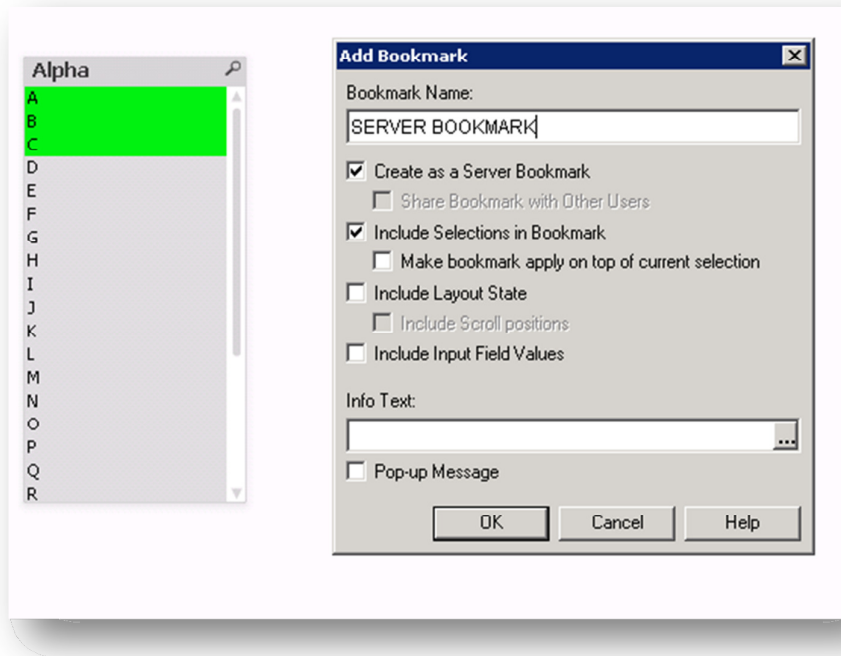


On User Document

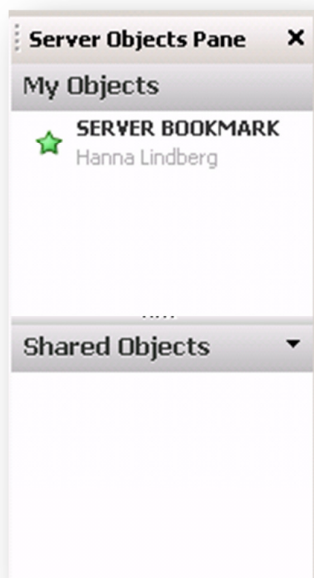


3.2 Create a server bookmark

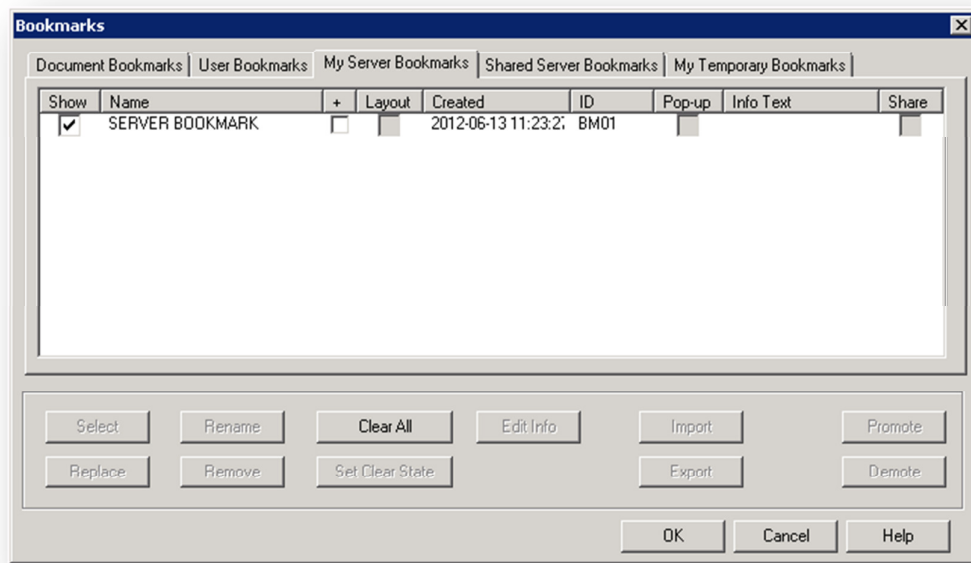
Open the document with IE Plugin Client and create a new bookmark. This will automatically be marked as a Server Bookmark, i.e. *Create as a Server bookmark* is checked.



The bookmark will be added to My Objects in the **Server Objects Pane**

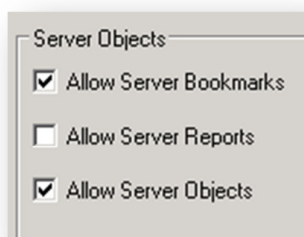


You can also go to Toolbar/Bookmarks and open More menu to Edit your bookmark

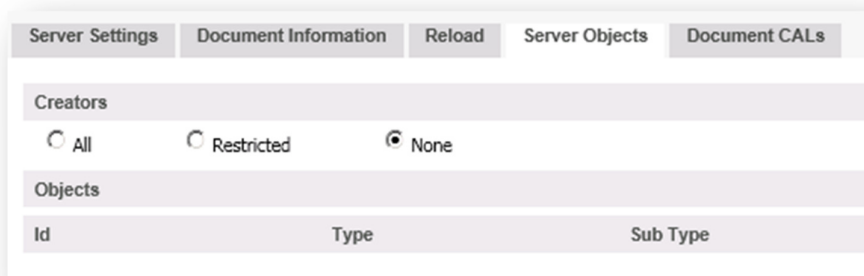


3.3 Share a Server Bookmark

To share your server bookmark with other users you need to check Allow Server Object on the Document:

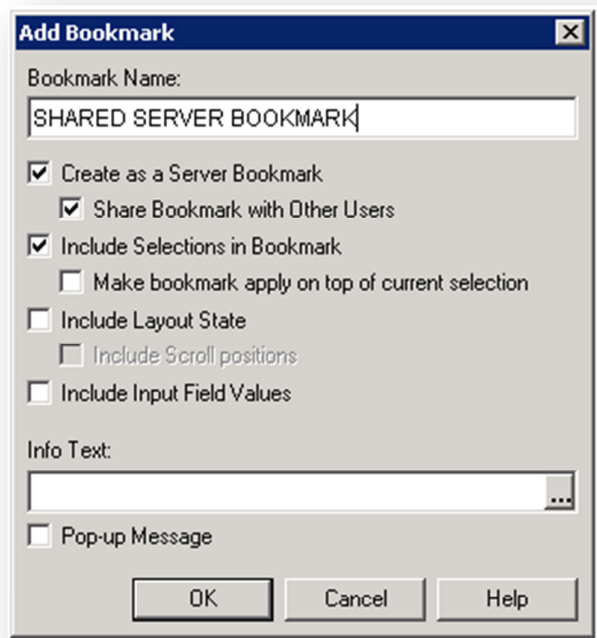


****If you only want to be able to share and create bookmarks but NOT other Server object you can on the User Document choose Creators *None*.**

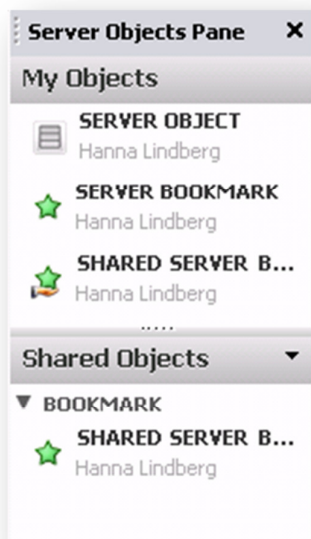


3.3.1 Create a shared server bookmark

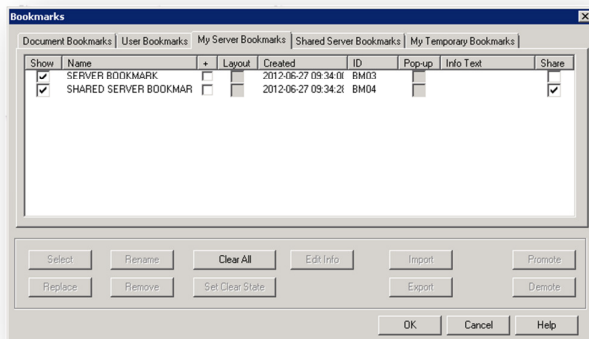
Create your Bookmark and you are now able to check ***Share Bookmark with Other Users***.



Your bookmark will be added to My Objects and Shared Objects in the Server Objects Pane



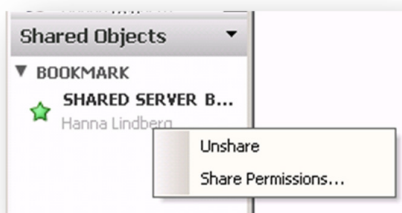
You can also to got Toolbar/Bookmarks and open More menu and see the shared bookmark under My Server Bookmarks tab:



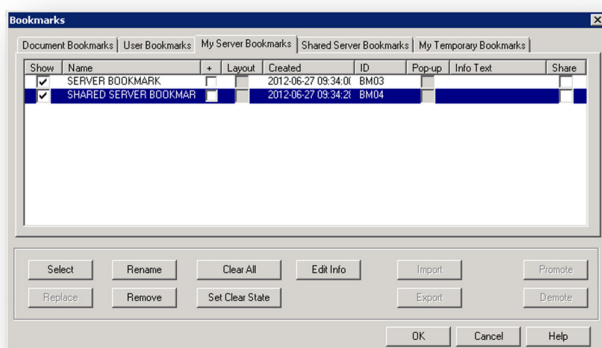
*Note: Under the **Shared Server Bookmarks** tab you will only be able to see bookmarks shared by other users.*

3.3.1 Unshare a server bookmark

By right click on the shared Server object in the server objects pane you are able to **Unshare**

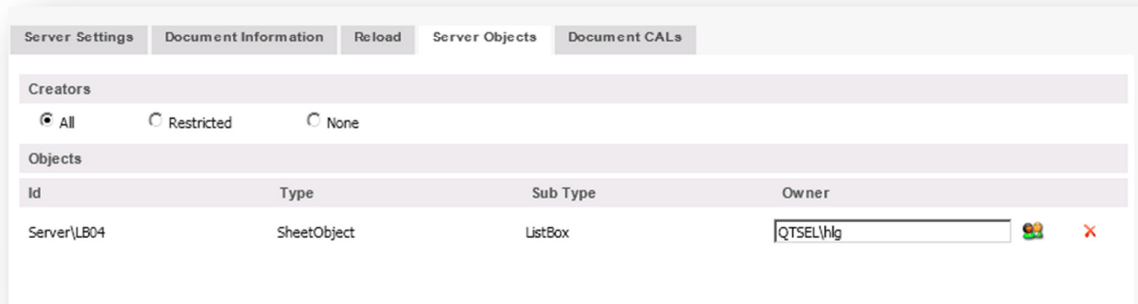


You can also unshare you object by opening the Bookmark More menu and uncheck option *Share* for your server bookmark:





4. Qlikview Server

The Server Objects can also be seen in Qlikview Enterprise Management Console/Documents



5. Shared file

The server objects are stored in the .shared file for the document.

	SERVER_OBJECTS.qvw.Shared	2012-06-21 14:15	SHARED File	32 KB
	SERVER_OBJECTS.qvw.Meta	2012-06-20 10:08	META File	2 KB
	SERVER_OBJECTS	2012-06-21 13:15	QlikView Document	184 KB

With the Power Tool SharedFile Viewer you are able to visualize the content of any given .shared file belonging to .qvw documents from Qlikview Server. The .shared files contains collaboration objects like bookmarks, charts, listboxes or other objects created by client users on the server in the .qvw document.

SharedFile Viewer: C:\Users\hlg\Desktop\SERVER_OBJECTS.qvw.Shared

Name	Value		Id	Type	User	Length	Offset
HeaderSize	8	<input checked="" type="checkbox"/>		DocumentContent	QTSEL\hlg	55	1024
BlockSize	512	<input checked="" type="checkbox"/>		DocumentContent	QTSEL\KBD	19	4608
MagicText		<input checked="" type="checkbox"/>	BM01	Bookmark		215	2048
MajorVersion	9	<input checked="" type="checkbox"/>	BM01	MetaData	QTSEL\hlg	18	1536
MinorVersion	56	<input checked="" type="checkbox"/>	BM04	Bookmark		294	4096
TocOffset	12288	<input checked="" type="checkbox"/>	BM04	MetaData	QTSEL\hlg	18	3072
TocSize	1536	<input checked="" type="checkbox"/>	CH01	GraphProperties		7960	16384
CorrectCasing	True	<input checked="" type="checkbox"/>	CH01	MetaData	QTSEL\hlg	19	9216
BitmapOffset	512	<input checked="" type="checkbox"/>	CH02	GraphProperties		7960	24576
BitmapSize	512	<input checked="" type="checkbox"/>	CH02	MetaData	QTSEL\hlg	19	10240
GenerationCounter	115	<input checked="" type="checkbox"/>	Document\S...	ObjectContent	QTSEL\hlg	89	2560
		<input checked="" type="checkbox"/>	Document\S...	ObjectContent	QTSEL\hlg	47	9728
		<input checked="" type="checkbox"/>	LB01	ListboxProperties		994	8192
		<input checked="" type="checkbox"/>	LB01	MetaData	QTSEL\hlg	19	6656
		<input checked="" type="checkbox"/>	SH01	MetaData	QTSEL\hlg	19	3584
		<input checked="" type="checkbox"/>	SH01	SheetProperties		239	5120
		<input checked="" type="checkbox"/>	SH02	MetaData	QTSEL\hlg	19	5632
		<input checked="" type="checkbox"/>	SH02	SheetProperties		244	6144

OK ☐ Color on Top ☐ Show Hash

You can download the Power Tools from here:

<http://d1cf4w4kkla6tb.cloudfront.net/Power%20Tools/1.0/PowerTools.exe>